

Sew By Row

Block of the Month

Month Six - Spools Row



Unfinished size: 4 1/2" x 54 1/2"
Make one.

Refer to pages 15 & 16 of the Sew By Row Quilt Booklet for Block cutting and construction and page 23 for Row Sashing construction.

1/3 yard



C9711-COTTAGE

Blocks, page 15:

A - Cut 26

B - Cut 52

C - Cut 14

Row Sashing, page 23:

ST-A - Cut 11 - 1" x 4 1/2" rectangles

ST-B - Cut 2 - 1 1/2" x 4 1/2" rectangles

10" x 10" of each:



C6409-YELLOW



WB6422-ORANGE



C6401-BLUE



C6400-RASPBERRY



C6408-GREEN

Blocks, page 15
(from each fabric):
D - Cut 1 (13 total)



C6400-ORANGE



WB6423-AQUA



C6407-RED



C6400-TEAL



C6403-MACARONI



C6401-SONGBIRD



C6401-RED



C6405-DENIM

12" x 20"



C6404-NUTMEG

Blocks, page 15:

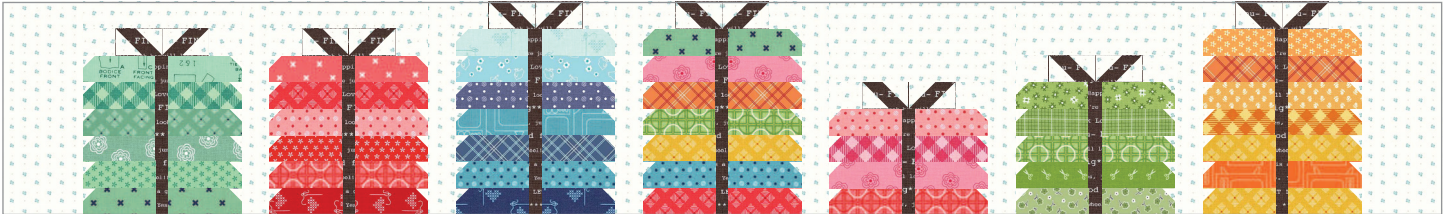
E - Cut 26



Sew By Row

Block of the Month

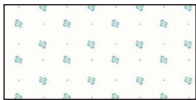
Month Seven - Fabric Bundle Row



Unfinished size: 8 1/2" x 54 1/2"
Make one.

Refer to pages 17 to 21 of the Sew By Row Quilt Booklet for Block cutting and construction and page 23 for Row Sashing construction.

5/8 yard



C9711-COTTAGE

4 Fabric Bundle Block, page 17:

A - Cut 2

B - Cut 4

C - Cut 8

AA - Cut 1

5 Fabric Bundle Block, page 18:

A - Cut 2

B - Cut 4

C - Cut 10

AA - Cut 1

Row Sashing, page 23:

SF-A - Cut 6 - 1 1/2" x 8 1/2" rectangles

SF-B - Cut 2 - 3 1/2" x 8 1/2" rectangles

6 Fabric Bundle Block, page 19:

A - Cut 4

B - Cut 8

C - Cut 24

AA - Cut 2

7 Fabric Bundle Block, page 20:

A - Cut 6

B - Cut 12

C - Cut 42

10" x 10"



C6400-RASPBERRY

4 Fabric Bundle Block, page 17:

D - Cut 2

10" x 10" of each:



C9695-GRANNYAPPLE



C9697-GRANNYAPPLE



C6408-GREEN



C10925-GREEN

5 Fabric Bundle Block, page 18
(from each fabric):
D - Cut 2 (8 total)

10" x 10" of each:



WB6421-MINT



C6400-TEAL



C6409-TEAL



C6404-ALPINE

6 Fabric Bundle Block, page 19
(from each fabric):
D - Cut 2 (16 total)



C6403-TEAL



C6410-CORAL



C6403-RED



C6401-RED



Sew By Row

Block of the Month

Month Seven - Fabric Bundle Row, p. 2

10" x 10" of each:



C6401-SONGBIRD



WB6423-AQUA



C6405-DENIM



C6411-TURQUOISE



WB6422-BLUE



C6401-BLUE



C6403-MACARONI



C9702-DAISY



C6400-ORANGE



C6411-ORANGE



C6409-YELLOW

7 Fabric Bundle Block, page 19
(from each fabric):
D - Cut 2 (22 total)

10" x 10" of each:



C6409-YELLOW



C6405-TURQUOISE



WB6422-ORANGE

7 Fabric Bundle Block, page 19
(from each fabric):
D - Cut 4 (12 total)

10" x 10"



C6404-PINK

4 Fabric Bundle Block, page 17:
D - Cut 2
7 Fabric Bundle Block, page 19:
D - Cut 2

10" x 10" of each:



C6405-CORAL



C6407-RED

4 Fabric Bundle Block, page 17
(from each fabric):
D - Cut 2 (4 total)

6 Fabric Bundle Block, page 19:
(from each fabric):
D - Cut 2 (4 total)

10" x 10"



C6407-GREEN

5 Fabric Bundle Block, page 18:
D - Cut 2
7 Fabric Bundle Block, page 19:
D - Cut 2

10" x 10" of each



C6409-CAYENNE

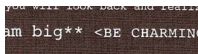


C6410-TEAL

6 Fabric Bundle Block, page 19
(from each fabric):
D - Cut 2 (4 total)

7 Fabric Bundle Block, page 19:
(from each fabric):
D - Cut 2 (4 total)

9" x 20"



C6402-GRAY

4 Fabric Bundle Block, page 17:
E - Cut 2
F - Cut 1

6 Fabric Bundle Block, page 19:
E - Cut 4
F - Cut 2

5 Fabric Bundle Block, page 18:
E - Cut 2
F - Cut 1

7 Fabric Bundle Block, page 20:
E - Cut 6
F - Cut 3

