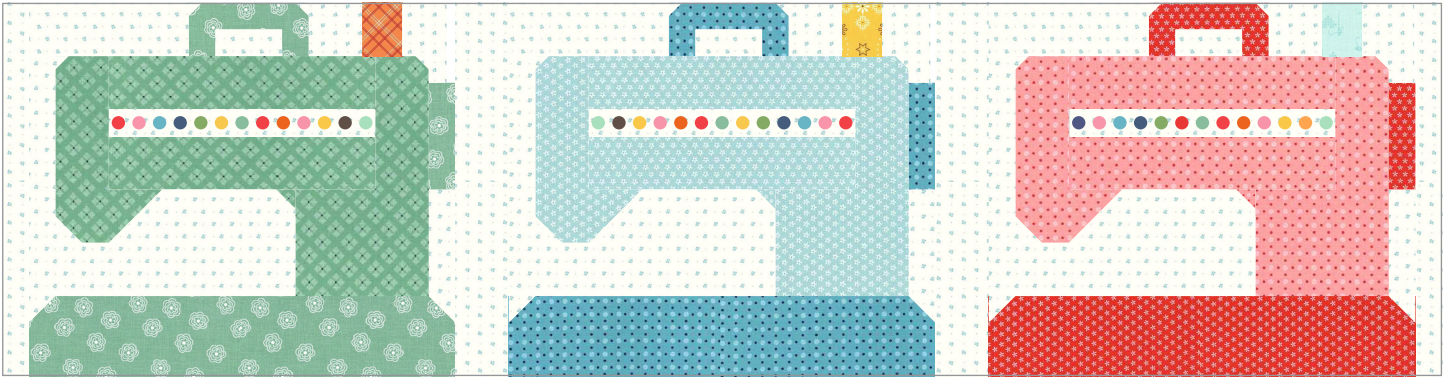


# Sew By Row

## Block of the Month

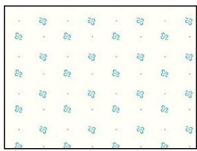
Month Three - Sewing Machine Row



Unfinished size: 14 1/2" x 54 1/2"  
Make one.

Refer to pages 7, 8 & 9 of the Sew By Row Quilt Booklet for Block cutting and construction and page 23 for Row Sashing construction.

5/8 yard



C9711-COTTAGE

Blocks, page 7:

A - Cut 3  
B - Cut 3  
C - Cut 3  
D - Cut 9  
E - Cut 3  
F - Cut 3  
G - Cut 3  
H - Cut 12  
I - Cut 12  
S - Cut 3

Row Sashing, page 23:

SM-A - Cut 2 - 2 1/2" x 14 1/2" rectangles  
SM-B - Cut 2 - 1 1/2" x 14 1/2" rectangles

12" x 20" of each:



C6409-TEAL



C6403-COTTAGE

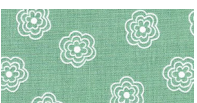


C6405-CORAL

Blocks, page 7 (from each fabric):

J - Cut 1 (3 total)  
K - Cut 2 (6 total)  
L - Cut 2 (6 total)  
M - Cut 1 (3 total)  
N - Cut 1 (3 total)

10" x 20" of each:



C6404-ALPINE



C6405-TURQUOISE



C6403-RED

Blocks, page 7 (from each fabric):

O - Cut 1 (3 total)  
P - Cut 1 (3 total)  
Q - Cut 1 (3 total)  
R - Cut 2 (6 total)

10" x 10" of each:



WB6422-ORANGE



WB6420-HONEY



C6401-SONGBIRD

Blocks, page 7 (from each fabric):  
T - Cut 1 (3 total)

