

Sew By Row

Block of the Month

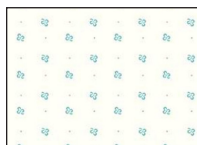
Month Six - Spools Row



Unfinished size: 4 1/2" x 54 1/2"
Make one.

Refer to pages 15 & 16 of the Sew By Row Quilt Booklet for Block cutting and construction and page 23 for Row Sashing construction.

1/3 yard



C9711-COTTAGE

Blocks, page 15:

A - Cut 26

B - Cut 52

C - Cut 14

Row Sashing, page 23:

ST-A - Cut 11 - 1" x 4 1/2" rectangles

ST-B - Cut 2 - 1 1/2" x 4 1/2" rectangles

10" x 10" of each:



C6409-YELLOW



WB6422-ORANGE



C6401-BLUE



C6400-RASPBERRY

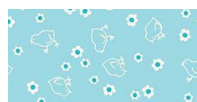


WB6420-GREEN

Blocks, page 15
(from each fabric):
D - Cut 1 (13 total)



C6400-ORANGE



WB6423-AQUA



C6407-RED



C6400-TEAL



C6403-MACARONI



C6401-SONGBIRD



C6401-RED



C6405-DENIM

12" x 20"



C6404-NUTMEG

Blocks, page 15:

E - Cut 26

