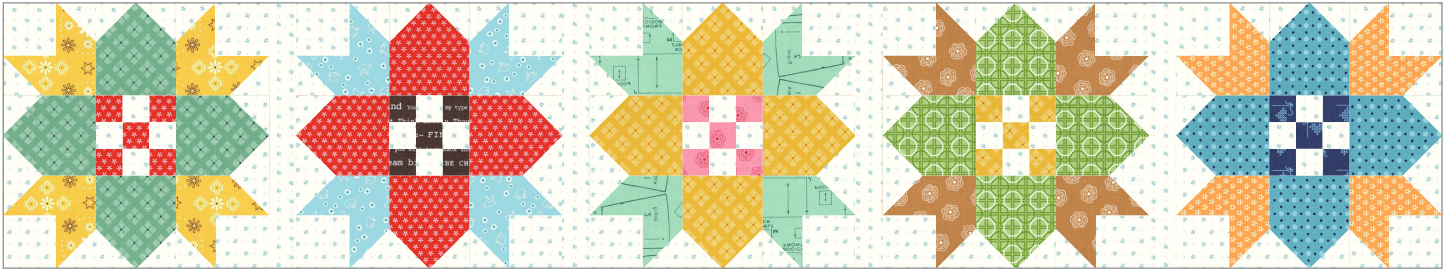


Sew By Row

Block of the Month

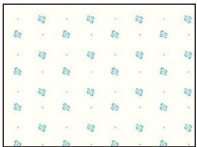
Month Four - Checkerboard Star Row



Unfinished size: 10 1/2" x 54 1/2"
Make one.

Refer to pages 10 & 11 of the Sew By Row Quilt Booklet for Block cutting and construction and page 23 for Row Sashing construction.

5/8 yard



C9711-COTTAGE

Blocks, page 10:

A - Cut 20
B - Cut 80
C - Cut 20

Row Sashing, page 23:

SC-A - Cut 4 - 1 1/2" x 10 1/2" rectangles

10" x 15" of each:



C6409-TEAL



C6407-GREEN



C6405-TURQUOISE

Blocks, page 10
(from each fabric):
D - Cut 4 (12 total)

10" x 20" of each:



WB6420-HONEY



WB6423-AQUA



WB6421-MINT



C6404-NUTMEG



C6403-MACARONI

Blocks, page 10
(from each fabric):
E - Cut 4 (20 total)
F - Cut 4 (20 total)

10" x 10" of each:



C6402-GRAY



C6404-PINK



C6401-BLUE

Blocks, page 10
(from each fabric):
G - Cut 5 (15 total)

10" x 15" of each:



C6403-RED



C6409-YELLOW

Blocks, page 10
(from each fabric):
D - Cut 4 (8 total)
G - Cut 5 (10 total)

