

Sew By Row

Block of the Month

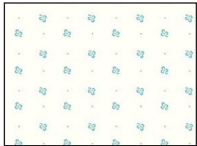
Month Five - Iron Row



Unfinished size: 5 1/2" x 54 1/2"
Make one.

Refer to pages 12, 13 & 14 of the Sew By Row Quilt Booklet for Block cutting and construction and page 23 for Row Sashing construction.

1/3 yard



C9711-COTTAGE

Blocks, page 12:

A - Cut 5	G - Cut 10
B - Cut 5	H - Cut 5
C - Cut 5	I - Cut 5
D - Cut 5	J - Cut 5
E - Cut 5	K - Cut 10
F - Cut 10	L - Cut 20

Row Sashing, page 23:

SI-A - Cut 4 - 1 1/2" x 5 1/2" rectangles

10" x 10" of each:



C6404-PINK



C6409-YELLOW



C6403-RED



WB6422-BLUE



C6403-TEAL

Blocks, page 12
(from each fabric):
M - Cut 1 (5 total)

10" x 15"



C6405-GRAY

Blocks, page 12:
N - Cut 5

10" x 10" of each:



C6409-CAYENNE



C6411-ORANGE



C6401-RED



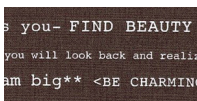
C6401-BLUE



C6404-ALPINE

Blocks, page 12
(from each fabric):
O - Cut 1 (5 total)
P - Cut 1 (5 total)
Q - Cut 1 (5 total)
R - Cut 1 (5 total)

10" x 10"



C6402-GRAY

Blocks, page 20:
S - Cut 5

