

Sew By Row

Block of the Month

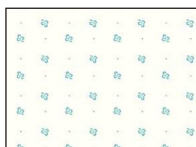
Month Two - Pin Cushion Row



Unfinished size: 4 1/2" x 54 1/2"
Make one.

Refer to pages 5 & 6 of the Sew By Row Quilt Booklet for Block cutting and construction and page 23 for Row Sashing construction.

18" x 20"



C9711-COTTAGE

Blocks, page 5:

- A - cut 11
- B - cut 11
- C - cut 44
- D - cut 22

Row Sashing, page 23:

- SP-A - cut 10 - 1 1/2" x 4 1/2" rectangles

10" x 15"



C120-CLOVER

Blocks, page 5:

- H - cut 33

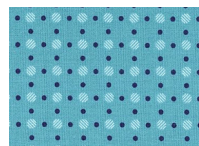
10" x 10" of each:



C6404-PINK



C6411-ORANGE



C6405-TURQUOISE



C6401-RED

Blocks, page 5

(from each fabric):

- E - cut 1 (11 total)
- F - cut 2 (22 total)
- G - cut 2 (22 total)



WB6422-BLUE



C6409-YELLOW



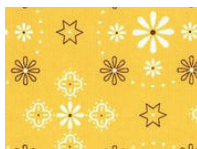
C6410-CORAL



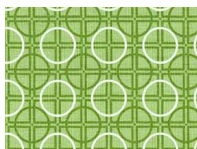
WB6423-AQUA



C6403-RED



WB6420-HONEY



C6407-GREEN

