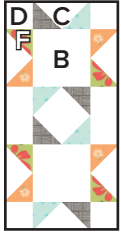


#13A ~ Evening Star Block



Make one
6 1/2" x 12 1/2" unfinished

#13B ~ Dragonfly Block



Make one
12 1/2" x 18 1/2" unfinished

Cutting:

Background	1 - 5 1/2" x width of fabric strip	A
	5 - 3 1/2" squares	B
	20 - 2" x 3 1/2" rectangles	C
	20 - 2" squares	D
	6 - 1 3/4" squares	E
Evening Star Units	<i>From each print cut:</i>	
	10 - 2" squares (40 total)	F
Dragonfly Unit	<i>From each print cut:</i>	
	1 - 5 1/2" x 18" rectangle (3 total)	G
	2 - 1 3/4" squares (6 total)	H



Features the Starburst 30 Degree Triangle Ruler by
Creative Grids (#CGRISE30)

Fabrics:



Fabrics A to E
9900-200



Fabric F
37586-20



Fabric F
37585-22



Fabric F
37580-16



Fabric F
37583-16



Fabrics G & H
37586-15



Fabrics G & H
37585-16



Fabrics G & H
37581-13

Use 1/4" seams and press as arrows indicate throughout.

Evening Star Block Assembly:

Draw a diagonal line on the wrong side of the Fabric F squares.

With right sides facing, layer a Fabric F square on one end of a Fabric C rectangle.

Stitch on the drawn line and trim 1/4" away from the seam.

Repeat on the opposite end with a coordinating Fabric F square.

Flying Geese Unit should measure 2" x 3 1/2".

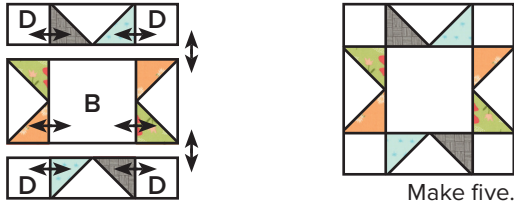


Make ten.

Make ten.

Assemble four Fabric D squares, four Flying Geese Units and one Fabric B square.

Evening Star Unit should measure $6\frac{1}{2}" \times 6\frac{1}{2}"$.



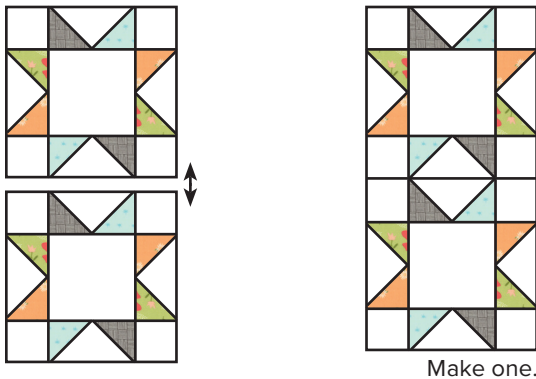
Make five.

Use two Evening Star Units to make the Evening Star Block.

Use three Evening Star Units to make the Dragonfly Block.

Assemble Block.

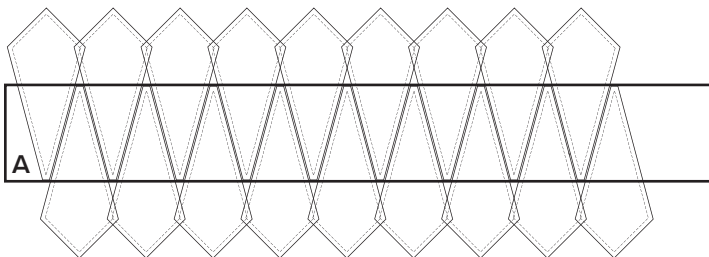
Evening Star Block should measure $6\frac{1}{2}" \times 12\frac{1}{2}"$.



Make one.

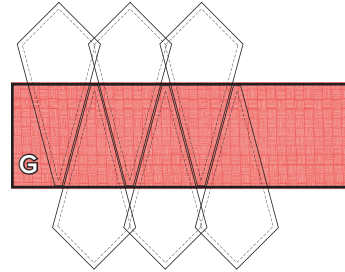
Dragonfly Block Assembly:

Using the Starburst Template, line up the $5\frac{1}{2}"$ line on the template with the top of the Fabric A strip. Cut eighteen Background Wedges from the strip.



Make eighteen.

Using the Starburst Template, line up the $5\frac{1}{2}"$ line on the template with the top of a Fabric G rectangle. Cut six Red Wedges from each Fabric G rectangle.



Make six.

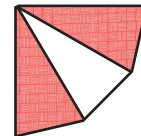
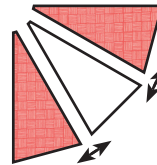


Make six.

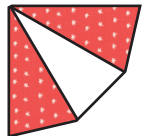


Make six.

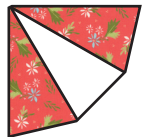
Assemble the Partial Dark Dragonfly Unit using two matching Red Wedges and one Background Wedge.



Make two.

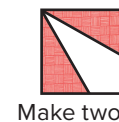
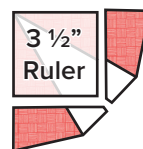


Make two.



Make two.

Trim the Partial Dark Dragonfly Unit to measure $3\frac{1}{2}" \times 3\frac{1}{2}"$.



Make two.

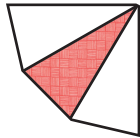
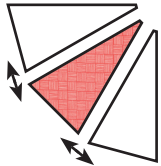


Make two.

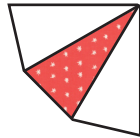


Make two.

Assemble the Partial Light Dragonfly Unit using two Background Wedges and one Red Wedge.



Make two.

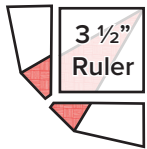


Make two.



Make two.

Trim the Partial Light Dragonfly Unit to measure $3\frac{1}{2}" \times 3\frac{1}{2}"$.



Make two.



Make two.



Make two.

Draw a diagonal line on the wrong side of the Fabric H squares.

With right sides facing, layer a Fabric H square on the bottom right corner of a matching Partial Dark Dragonfly Unit.

Stitch on the drawn line and trim $\frac{1}{4}"$ away from the seam.

Dark Dragonfly Unit should measure $3\frac{1}{2}" \times 3\frac{1}{2}"$.



Make two.



Make two.



Make two.

Draw a diagonal line on the wrong side of the Fabric E squares.

With right sides facing, layer a Fabric E square on the bottom left corner of a Partial Light Dragonfly Unit.

Stitch on the drawn line and trim $\frac{1}{4}"$ away from the seam.

Light Dragonfly Unit should measure $3\frac{1}{2}" \times 3\frac{1}{2}"$.



Make two.



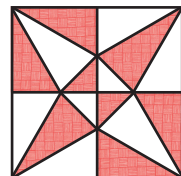
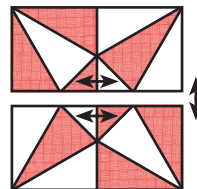
Make two.



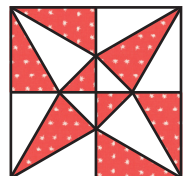
Make two.

Assemble two matching Dark Dragonfly Units and two matching Light Dragonfly Units.

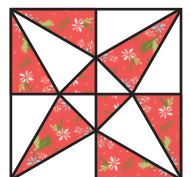
Dragonfly Unit should measure $6\frac{1}{2}" \times 6\frac{1}{2}"$.



Make one.



Make one.



Make one.

Assemble Block.

Dragonfly Block should measure 12 1/2" x 18 1/2".

