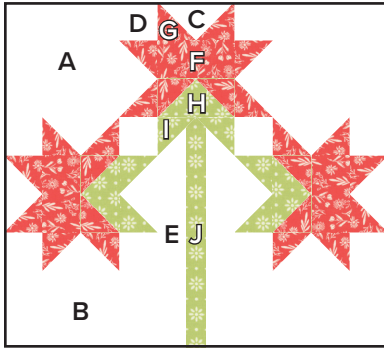


#3 ~ Carolina Lily Block



Make one
18 1/2" x 20 1/2" unfinished

Fabrics:



Fabrics A to E
9900-200



Fabrics F & G
37582-19



Fabrics H, I & J
37584-22

Cutting:

Background	2 - 6 1/2" squares	A
	2 - 4 1/2" x 8 1/2" rectangles	B
	11 - 2 1/2" x 4 1/2" rectangles	C
	10 - 2 1/2" squares	D
	2 - 2" x 12 1/2" rectangles	E
Flower Units	3 - 2 1/2" x 4 1/2" rectangles	F
	24 - 2 1/2" squares	G
Stem Unit	3 - 2 1/2" x 4 1/2" rectangles	H
	6 - 2 1/2" squares	I
	1 - 1 1/2" x 12 1/2" rectangle	J

Use 1/4" seams and press as arrows indicate throughout.

Block Assembly:

Draw a diagonal line on the wrong side of the Fabric G squares.

With right sides facing, layer a Fabric G square on one end of a Fabric C rectangle.

Stitch on the drawn line and trim 1/4" away from the seam.

Repeat on the opposite end.

Red Flying Geese Unit should measure 2 1/2" x 4 1/2".



Assemble two Fabric D squares and one Red Flying Geese Unit.

Red Petal Unit should measure 2 1/2" x 8 1/2".



With right sides facing, layer a Fabric G square on one end of a Fabric H rectangle.

Stitch on the drawn line and trim 1/4" away from the seam.

Repeat on the opposite end.

Red and Green Flying Geese Unit should measure 2 1/2" x 4 1/2".



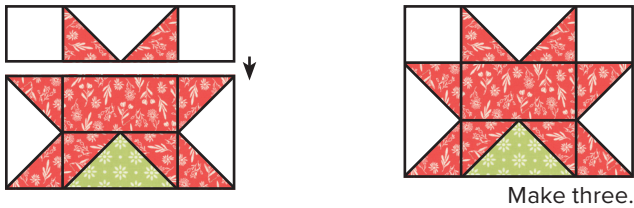
Assemble one Fabric F rectangle, one Red and Green Flying Geese Unit and two Red Flying Geese Units.

Center Unit should measure 4 1/2" x 8 1/2".



Assemble one Red Petal Unit and one Center Unit.

Flower Unit should measure 6 1/2" x 8 1/2".



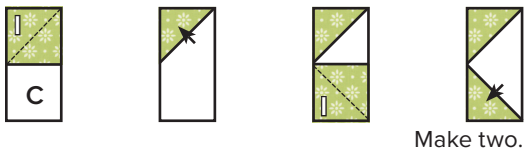
Draw a diagonal line on the wrong side of the Fabric I squares.

With right sides facing, layer a Fabric I square on the top end of a Fabric C rectangle.

Stitch on the drawn line and trim 1/4" away from the seam.

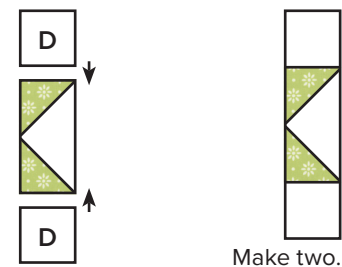
Repeat on the bottom end.

Green Flying Geese Unit should measure 2 1/2" x 4 1/2".



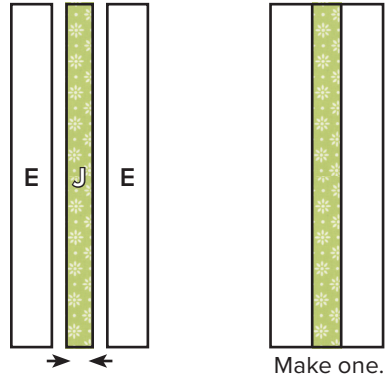
Assemble two Fabric D squares and one Green Flying Geese Unit.

Leaf Unit should measure 2 1/2" x 8 1/2".



Assemble two Fabric E rectangles and the Fabric J rectangle.

Partial Stem Unit should measure 4 1/2" x 12 1/2".

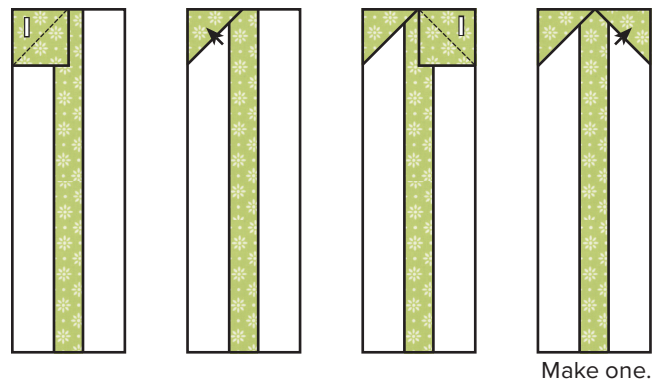


With right sides facing, layer a Fabric I square on the top left corner of the Partial Stem Unit.

Stitch on the drawn line and trim 1/4" away from the seam.

Repeat on the top right corner.

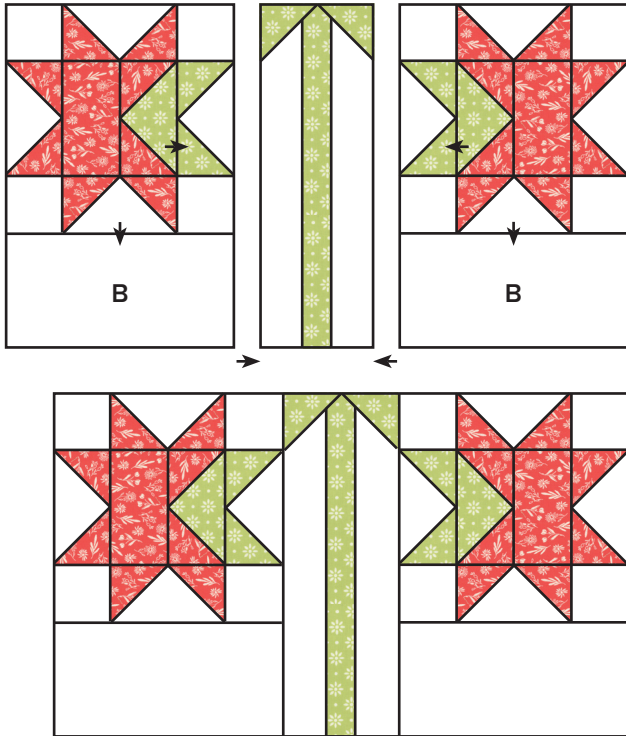
Stem Unit should measure 4 1/2" x 12 1/2".





Assemble two Flower Units, two Leaf Units, two Fabric B rectangles and the Stem Unit.

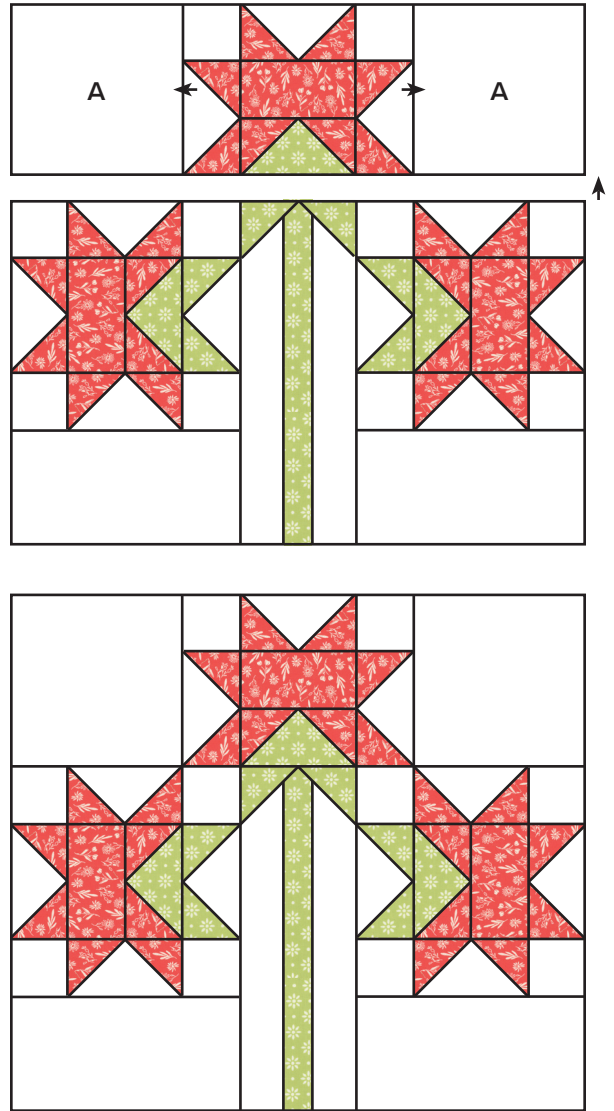
Bottom Carolina Lily Unit should measure 12 1/2" x 20 1/2".



Make one.

Assemble Block.

Carolina Lily Block should measure 18 1/2" x 20 1/2".



Make one.