

Mr. Frosty Placemats

www.ItsSewEmma.com · www.FatQuarterShop.com



Finished size: 12 ½" x 18 ½"

Pattern makes
four placemats!

Mr. Frosty features The Cookie Exchange by Sweetwater for Moda Fabrics.



Designed by Sherri Falls of This & That Pattern Company
Copyright 2016 Fat Quarter Shop, LLC. All rights reserved. Duplication of any kind is prohibited.

This pattern may be used for personal purposes only and may not be reproduced without the express written permission from the Fat Quarter Shop. This pattern may not be used for commercial purposes.

Mr. Frosty Placemats

Fabric Image	SKU	Yardage	Description	Quantity & Size		
	5625-26	1 ¼ yard	Snowmen & Gingham Units	A	8	1 ½" x 10 ½" rectangles
				B	160	1 ½" squares
				H	16	squares*
				L	8	rectangles*
				M	16	squares*
	5626-26	¾ yard	Placemat Center	C	80	1 ½" squares
	5625-21	1 yard	Snowmen & Gingham Units	D	80	1 ½" squares
				Q	4	squares*
				R	4	rectangles*
				S	4	rectangles*
				T	4	rectangles*
				U	4	rectangles*
				V	4	squares*
				W	4	rectangles*
				X	12	squares*
	5622-16	½ yard	Border	E	8	1 ½" x 10 ½" rectangles
				F	8	1 ½" x 18 ½" rectangles
	5622-12	10" x 10"	Scarf	Y	4	rectangles*
				Z	4	rectangles*
	5623-23	10" x 10"	Coal	AA	12	squares*
	5626-22	1 yard	Binding	300" of 2" wide bias binding		
	5620-11	1 ⅓ yard	Backing			

*Refer to Holiday Wishes Book page 51.

Mr. Frosty Placemats

Use ¼" seams and press as arrows indicate throughout.

Placemat Center:

Assemble two Fabric B squares and two Fabric D squares.

Strip One Unit should measure 1 ½" x 4 ½".

Make forty.



Assemble two Fabric C squares and two Fabric B squares.

Strip Two Unit should measure 1 ½" x 4 ½".

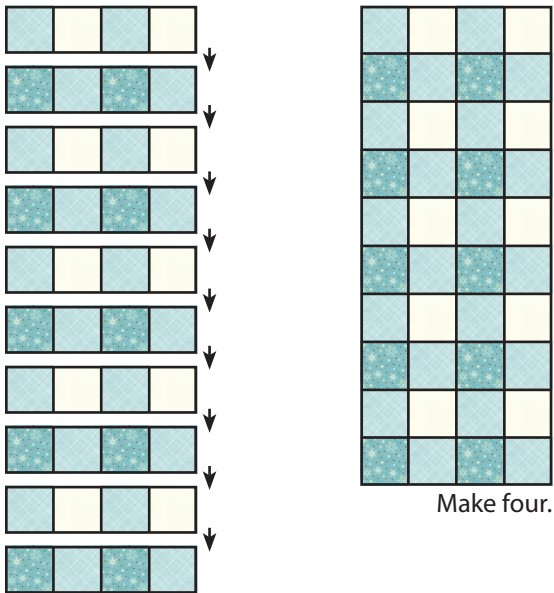
Make forty.



Assemble five Strip One Units and five Strip Two Units.

Left Gingham Unit should measure 4 ½" x 10 ½".

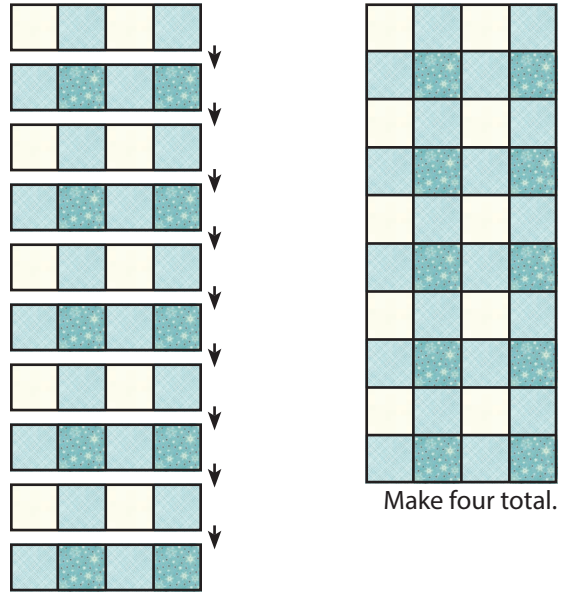
Make four.



Assemble five Strip One Units and five Strip Two Units.

Right Gingham Unit should measure 4 ½" x 10 ½".

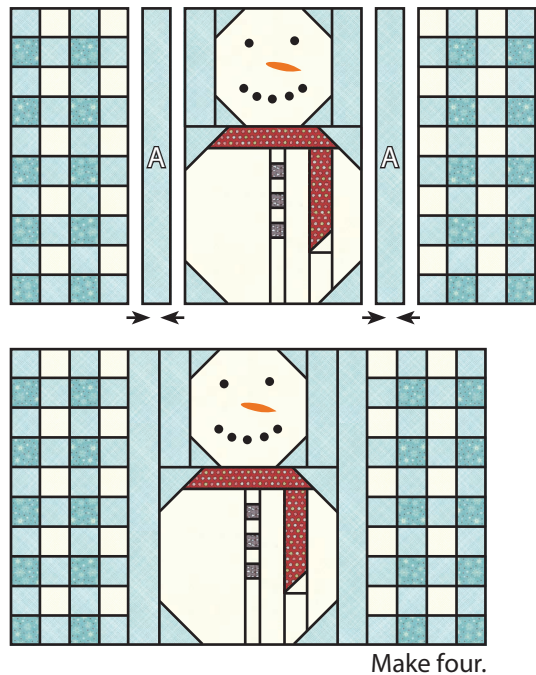
Make four.



Assemble one Left Gingham Unit, two Fabric A rectangles, one Snowman Block* and one Right Gingham Unit.

Placemat Center should measure 10 ½" x 16 ½".

Make four.

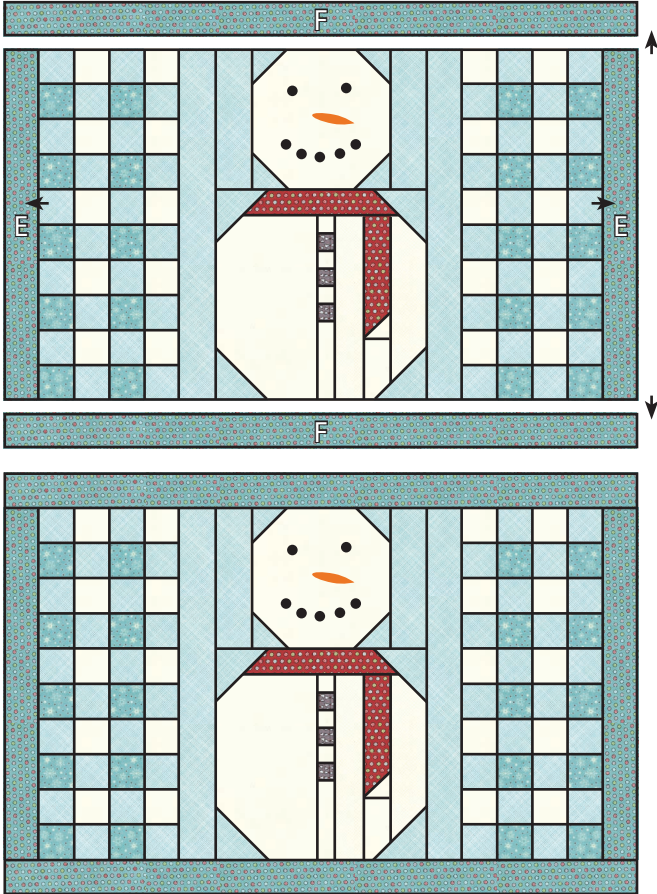


* Refer to pages 53 to 55 of the Holiday Wishes Book and follow the instructions for the Snowman Block.

Mr. Frosty Placemats

Borders:

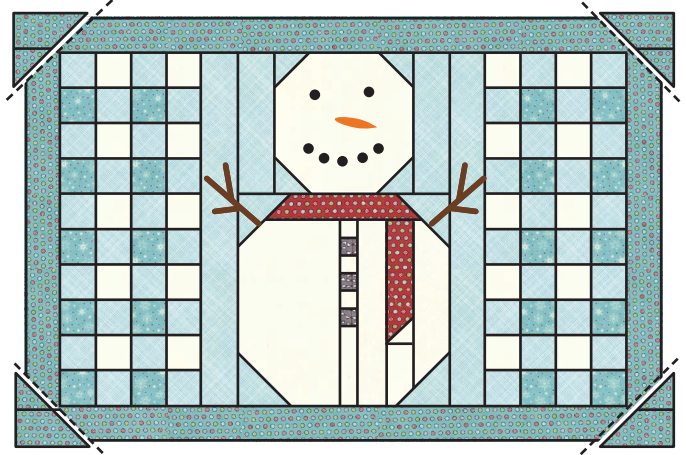
Attach side borders using the Fabric E rectangles.
Attach top and bottom borders using the Fabric F rectangles.



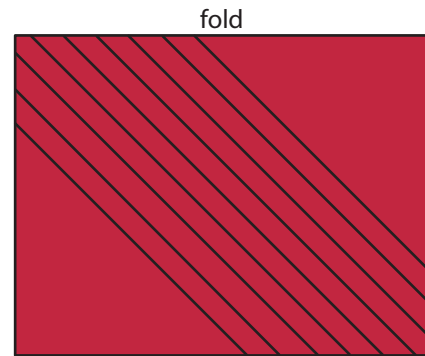
Make four.

Finishing:

Trim the corners of the Bordered Placemat $\frac{1}{4}$ " beyond the seam intersections.



Cut 300" of 2" wide bias binding (approximately 8 strips across the bias).



Quilt and bind as desired.

