



LLANO Street



FREE PATTERN



LLANO Street *leahduncan*

QUILT DESIGNED BY LEAH DUNCAN



morning walk

FABRICS DESIGNED BY LEAH DUNCAN

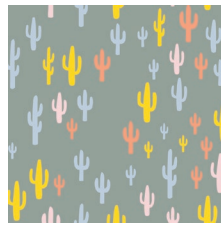
HOLY BREEZE



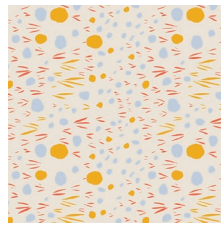
MWK-1110
BARE NOPAL GLEAM



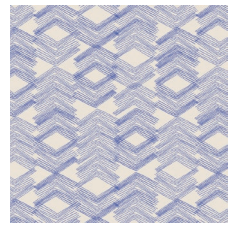
MWK-1111
SAHUARO PICKS TANG



MWK-1112
CACTI FIELD FESTIVAL



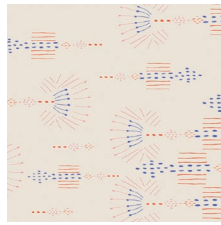
MWK-1113
WINDSWEPT IOTA SUN



MWK-1115
LIMESTONE FEEL INDIGO



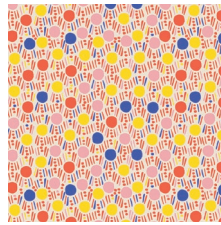
MWK-1116
MOJAVE SAND



MWK-1117
DESERT NEEDLEWORK GLORY



MWK-1118
VITRINE WATERMARKS GLAZE

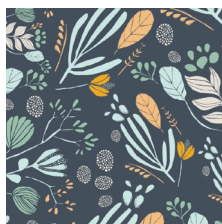


MWK-1119
DEW ON GRASS IMAGINED



MWK-1120
WISPY DAYBREAK NIMBUS

TOWN LAKE



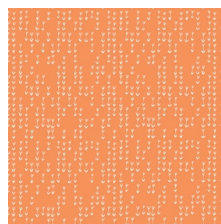
MWK-2110
BARE NOPAL GLOOM



MWK-2111
SAHUARO PICKS PALE



MWK-2112
CACTI FIELD FUN



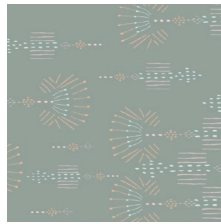
MWK-2114
MINIFLORES SUNBATHED



MWK-2115
LIMESTONE FEEL PITAHAYA



MWK-2116
MOJAVE ALOE



MWK-2117
DESERT NEEDLEWORK HONOR



MWK-2118
VITRINE WATERMARKS ZEST



MWK-2119
DEW ON GRASS GROUND



MWK-2120
WISPY DAYBREAK AURA



LLANO Street

FINISHED SIZE | 54" x 78"

FABRIC REQUIREMENTS

Fabric A	MWK-1111	¼yd.
Fabric B	MWK-1115	¼yd.
Fabric C	MWK-1116	¼yd.
Fabric D	MWK-1120	¼yd.
Fabric E	MWK-2110	¼yd.
Fabric F	MWK-2114	¼yd.
Fabric G	MWK-2115	¼yd.
Fabric H	MWK-2117	¼yd.
Fabric I	MWK-2118	¼yd.
Fabric J	MWK-2120	¼yd.
Fabric K	PE-432	¼yd.
Fabric L	PE-448	¼yd.
Fabric M	PE-426	¼yd.
Fabric N	PE-418	¼yd.
Fabric O	PE-452	¼yd.
Fabric P	PE-428	½yd.
Fabric Q	PE-408	2 ½yd.

BACKING FABRIC

PE-428 4 yds. (*suggested*)

BINDING FABRIC

PE-428 (Fabric **P**) (*included*)

CUTTING DIRECTIONS

¼" seam allowances are included.

WOF= Width of Fabric

LOF= Length of Fabric

Four (4) 7 7/8" x 4 7/8" Rectangles from fabric **A**

Four (4) 7 7/8" x 4 7/8" Rectangles from fabric **B**

Four (4) 7 7/8" x 4 7/8" Rectangles from fabric **C**

Four (4) 7 7/8" x 4 7/8" Rectangles from fabric **D**

Four (4) 7 7/8" x 4 7/8" Rectangles from fabric **E**

Four (4) 7 7/8" x 4 7/8" Rectangles from fabric **F**

Four (4) 7 7/8" x 4 7/8" Rectangles from fabric **G**

Four (4) 7 7/8" x 4 7/8" Rectangles from fabric **H**

Four (4) 7 7/8" x 4 7/8" Rectangles from fabric **I**

Four (4) 7 7/8" x 4 7/8" Rectangles from fabric **J**

Four (4) 7 7/8" x 4 7/8" Rectangles from fabric **K**

Four (4) 7 7/8" x 4 7/8" Rectangles from fabric **L**

Four (4) 7 7/8" x 4 7/8" Rectangles from fabric **M**

Four (4) 7 7/8" x 4 7/8" Rectangles from fabric **N**

Four (4) 7 7/8" x 4 7/8" Rectangles from fabric **O**

Four (4) 7 7/8" x 4 7/8" Rectangles from fabric **P**

Two (2) 5" x LOF strips from fabric **Q**

Two (2) 2" x LOF strips from fabric **Q**

Forty-Eight (48) 7 7/8" x 4 7/8" Rectangles from fabric **Q**

CONSTRUCTION

Sew all rights sides together with ¼" seam allowance.

- Take two 7 7/8" x 4 7/8" rectangles from fabrics **A-P** and twenty-four rectangles from fabric **Q**
- Start cutting them from the left bottom corner diagonally to the top right corner
- After you have all of the rectangles cut, start attaching the triangles from fabrics **A-P** to one triangle from fabric **Q**
- Press open

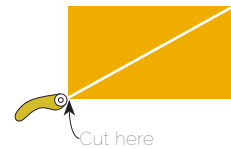


DIAGRAM 1

- Take the remaining 7 7/8" x 4 7/8" rectangles from fabrics **A-Q**
- Follow the same procedure as done in diagram 1 but this time the diagonal cut will be from the right bottom corner up to the top left corner.
- After you have all of the rectangles cut, start attaching the triangles from fabrics **A-P** to one triangle from fabric **Q**
- Press open

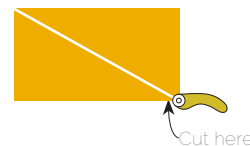


DIAGRAM 2

- Now that all the half rectangles are sewn together its time to start constructing the columns of this quilt top.
- Start attaching the rectangles in columns.
- Each column will be composed of sixteen half rectangles.
- Attach them in the following order: **KQ-JQ-GQ-CQ-LQ-IQ-MQ-AQ-FQ-HQ-OQ-NQ-BQ-DQ-EQ-PQ**
- Sew two columns with the diagonal going from left to right and two other columns with the diagonal going from right to left.
- Follow the cover picture as a reference.

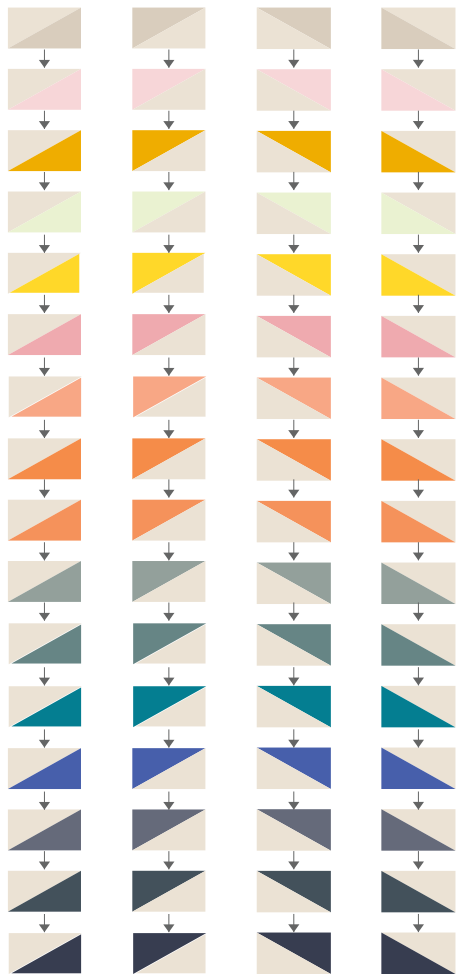


DIAGRAM 3

- Take the remaining pieces, you should have two from each fabric combination.
- Pair them and start attaching them together forming a white triangular shape in the middle.
- After all the pieces are paired together you are ready to make the last column of this quilt top.
- Attach them in the following order: **P-E-D-B-N-O-F-A-M-H-I-L-C-G-J-K**

x x

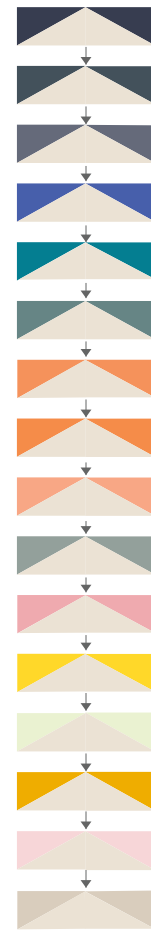


DIAGRAM 4

ASSEMBLING THE TOP

Sew all rights sides together with $\frac{1}{4}$ " seam allowance. Press open.

- Follow the cover photo to help you with the quilt arrangement.
- Take the 5' x LOF and the 2' x LOF strips.
- The 5' strips will be the side borders and the 2' strips will go in-between the columns made in diagram 3.
- Diagram 4 column will be the center piece of this quilt.
- Start attaching the columns and strips together following the cover picture.



BINDING

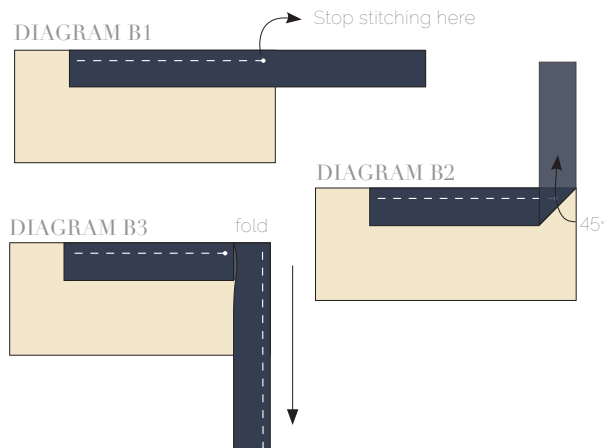
Sew rights sides together.

- Cut enough strips $1\frac{1}{2}$ ' wide by the width of the fabric **P** to make a final strip 270' long. Start sewing the binding strip in the middle of one of the sides of the quilt, placing the strip right side down and leaving an approximated 5' tail. Sew with $\frac{1}{4}$ ' seam allowance (using straight stitch), aligning the strip's raw edge with the quilt top's raw edge.
- Stop stitching $\frac{1}{4}$ ' before the edge of the quilt (**DIAGRAM B1**). Clip the threads. Remove the quilt from under the machine presser foot. Fold the strip in a motion of 45° and upward, pressing with your fingers (**DIAGRAM B2**). Hold this fold with your finger, bring the strip down in line with the next edge, making a horizontal fold that aligns with the top edge of the quilt (**DIAGRAM B3**). Start sewing at $\frac{1}{4}$ ' of the border, stitching all the layers. Do the same in the four corners of the quilt.
- Stop stitching before you reach the last 5 or 6 inches. Cut the threads and remove the quilt from under the machine presser foot. Lay the loose ends of the binding flat along the quilt edge, folding the ends back on themselves where they meet. Press them together to form a crease. Using this crease as the stitching line, sew the two open ends of the binding with right sides together (you can help yourself marking with a pencil if the crease is difficult to see).
- Trim seam to $\frac{1}{4}$ ' and press open. Complete the sewing. Turn binding to back of the quilt, turn raw edge inside and stitch by hand using blind stitch.

QUILT ASSEMBLY

Sew rights sides together.

- Place BACKING FABRIC on a large surface wrong side up. Stretch it with masking tape against that surface.
- Place BATTING on top of backing fabric.
- Place TOP on top of the batting with right side facing up. Smooth away wrinkles using your hands.
- Pin all layers together and baste with basting thread, using long stitches. You can also use safety pins to join the layers.
- Machine or hand quilt starting at the center and working towards the corners. Remember that quilting motifs are a matter of personal preference. Have fun choosing yours!
- After you finished, trim excess of any fabric or batting, squaring the quilt to proceed to bind it.



XX

Congratulations & enjoy

XX



artgalleryfabrics.com

NOTE: While all possible care has been taken to ensure the accuracy of this pattern, we are not responsible for printing errors or the way in which individual work varies. Please read instructions carefully before starting the construction of this quilt. If desired, wash and iron your fabrics before starting to cut.

© 2015 Courtesy of Art Gallery Quilts LLC. All Rights Reserved.