

# snapshots QUILT ALONG

## Fabric Requirements

You can help by donating to St. Jude Children's Research Hospital®: [www.FatQuarterShop.com/Snapshots](http://www.FatQuarterShop.com/Snapshots)

Snapshots Quilt Along Quilt Kits and Backing Sets  
available at [www.FatQuarterShop.com](http://www.FatQuarterShop.com).

### Fabric Requirements for Quilt Top (66 ½" x 88 ½"):

21 Fat Quarters for Snapshots Blocks:



55100-11



55100-12



55100-13



55101-12



55102-19



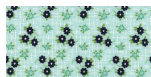
55102-21



55102-22



55103-14



55104-12



55104-13



55104-14



55104-17



55105-11



55105-12



55105-17



55107-11



55107-14



55108-11



55108-12

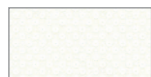


55108-17



55108-19

3 ¾ yards  
background fabric



55105-14

2 ½ yards  
Sashing and Borders



45008-22

1 ⅞ yards  
Block Frames and Binding



45010-44

Save eighteen  
3 ½" x 4 ½" rectangles  
from the fat quarters for the  
pieced backing!

### Fabric Requirements for Pieced Backing:

10" x 20" piece  
Camera Block



55107-11

½ yard  
Second Border



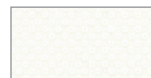
45010-44

10" x 20" piece  
Camera Block



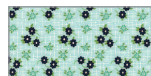
55105-17

1 yard  
First Border



55105-14

Fat Quarter  
Camera Block



55104-12

4 ⅞ yards  
Background



55105-12

Our Snapshots quilt features Daysail by Bonnie & Camille and Dottie by Moda Fabrics.



1-866-826-2069  
[www.FatQuarterShop.com](http://www.FatQuarterShop.com)  
[www.YouTube.com/FatQuarterShop](http://www.YouTube.com/FatQuarterShop)